

Brompton Townhouses



Welcome

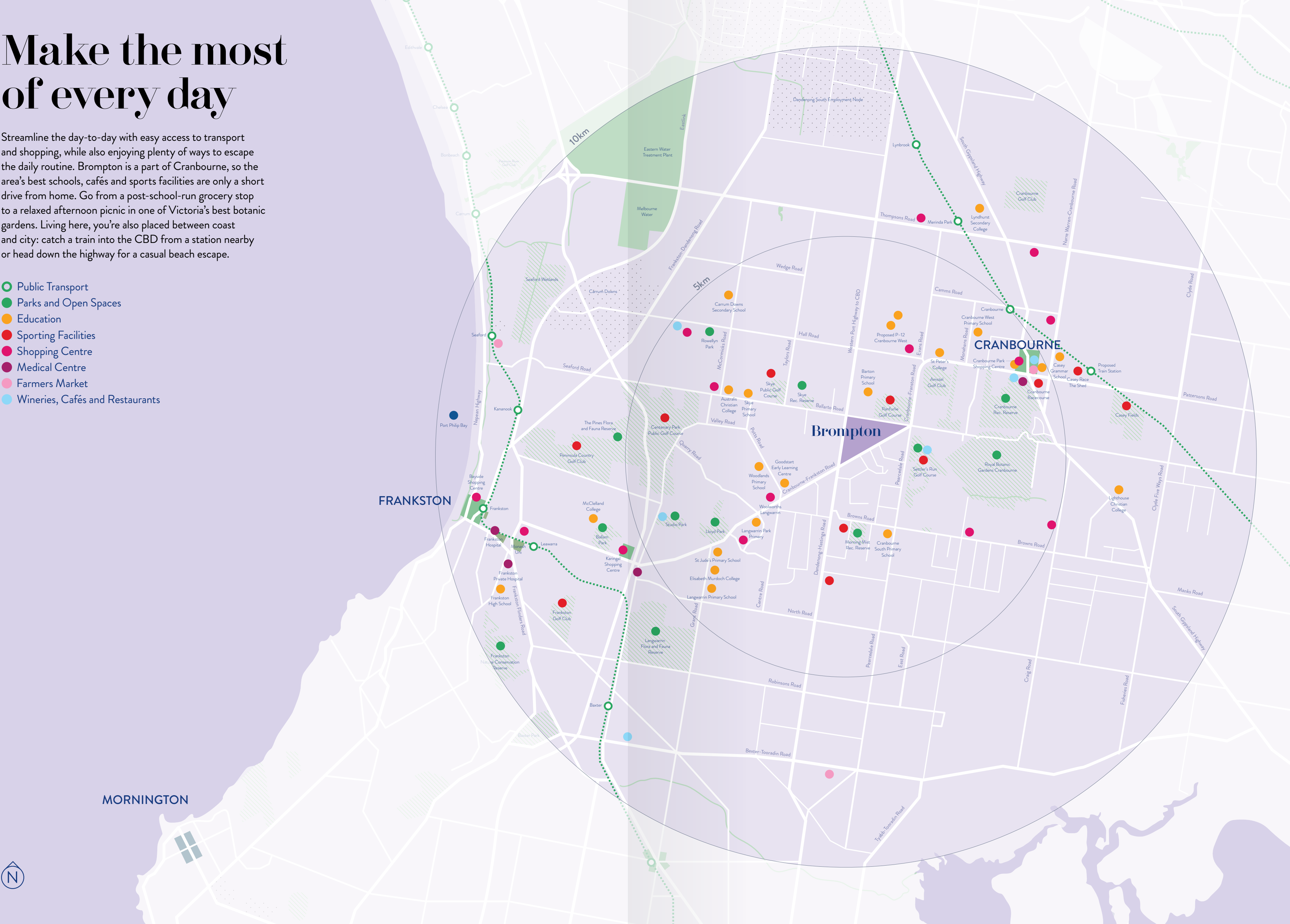
Live a local community lifestyle amid green spaces and natural wetlands in our new neighbourhood.
Brompton Townhomes by Wolfdene.



Make the most of every day

Streamline the day-to-day with easy access to transport and shopping, while also enjoying plenty of ways to escape the daily routine. Brompton is a part of Cranbourne, so the area's best schools, cafés and sports facilities are only a short drive from home. Go from a post-school-run grocery stop to a relaxed afternoon picnic in one of Victoria's best botanic gardens. Living here, you're also placed between coast and city: catch a train into the CBD from a station nearby or head down the highway for a casual beach escape.

- Public Transport
- Parks and Open Spaces
- Education
- Sporting Facilities
- Shopping Centre
- Medical Centre
- Farmers Market
- Wineries, Cafés and Restaurants



Masterplan

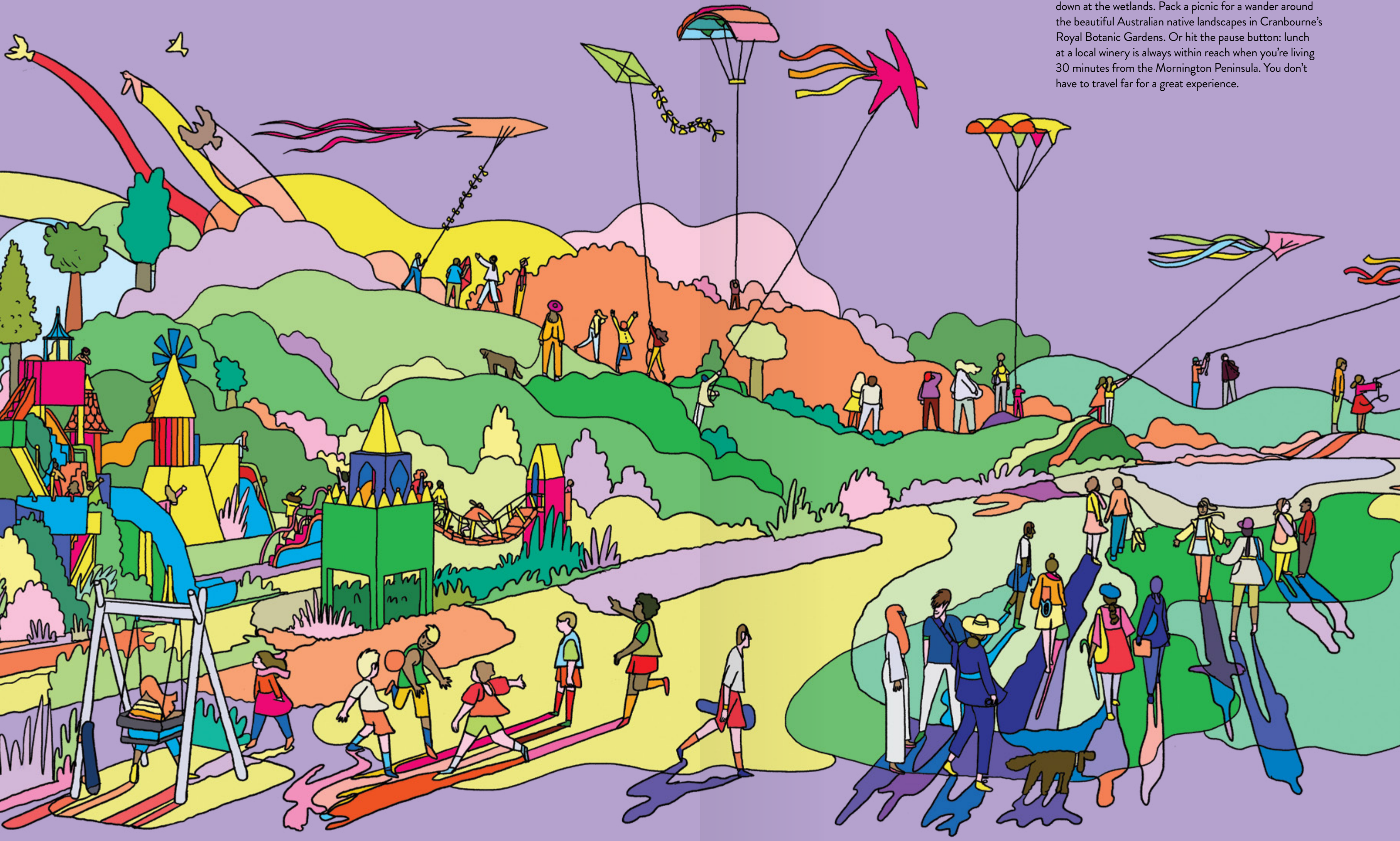
Brompton is an accredited sustainable community planned and designed around the site's natural features. A model example for walkable neighbourhoods, our town is set among parks and wetlands, with waterways, bike paths and walking trails. These have been carefully considered to connect the shopping and town centre to its surrounds, providing all your daily needs within an easy commute and walking distance for all residents.



- ↖ Melbourne CBD
- ↗ Cranbourne
- Mornington Peninsula
- ↘ Frankston

Living well

Forget the concrete jungle: more than 15 per cent of Brompton is devoted to open spaces for you to enjoy. Try out the new training wheels or take the kids bird-watching down at the wetlands. Pack a picnic for a wander around the beautiful Australian native landscapes in Cranbourne's Royal Botanic Gardens. Or hit the pause button: lunch at a local winery is always within reach when you're living 30 minutes from the Mornington Peninsula. You don't have to travel far for a great experience.



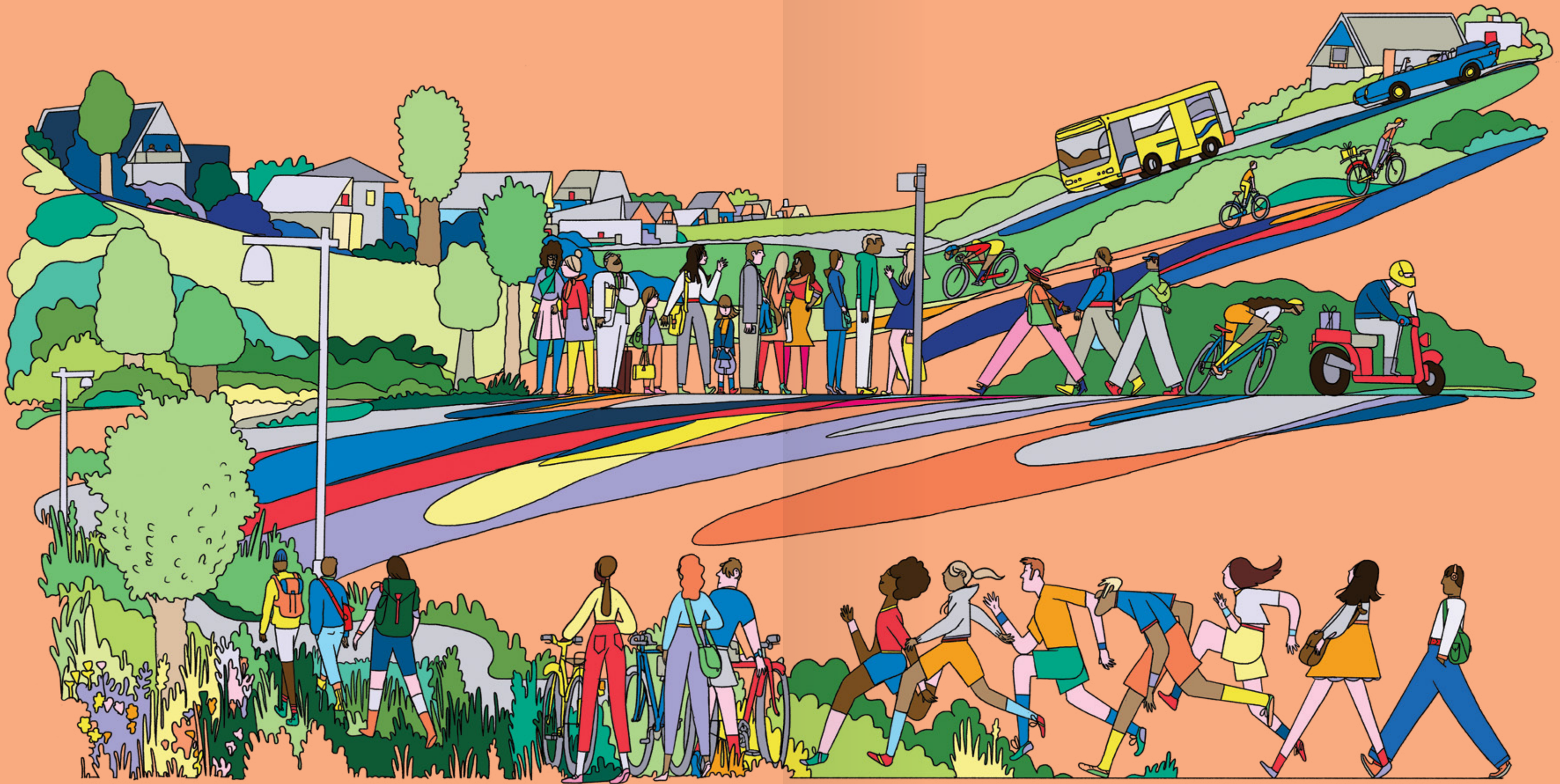
Education

Little ones get tended to at one of many nearby childcare centres. Nurture an early love of reading at libraries in local and surrounding areas. When it's time to start prep, you're surrounded by Cranbourne and Langwarrin's first-rate primary and secondary schools. Wofldene gets involved too, from supporting the learn-to-swim program at local schools to sponsoring the "Human-Powered Vehicle" racing team, and introducing students to yoga.



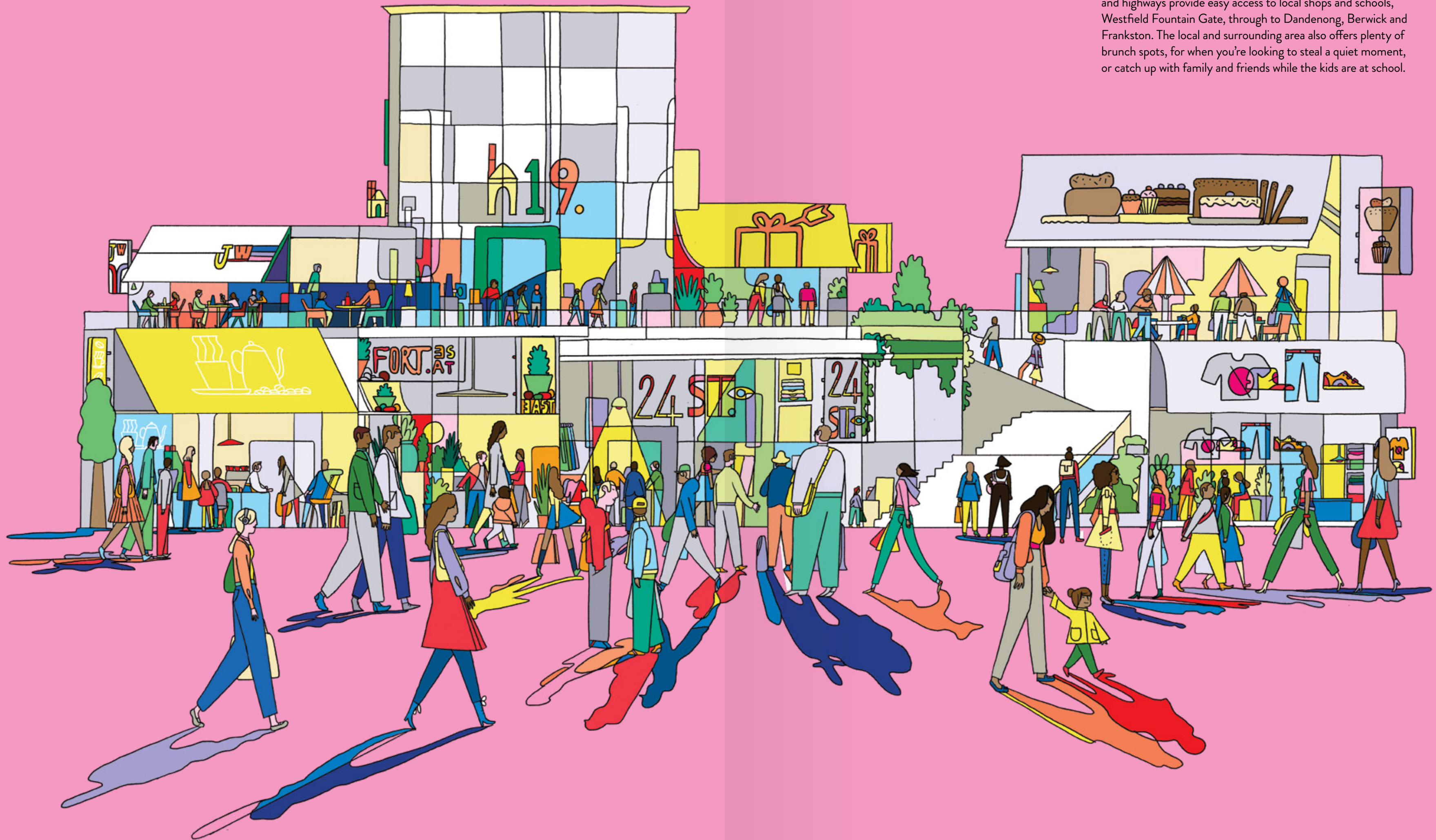
Going places

Our community enjoys direct connections to local medical centres, community services and sporting amenities, all accessible by bus or bike. Not far afield you can get competitive playing golf, football, cricket, rugby, tennis or netball at Casey Fields. And if being a spectator is more your thing, cheer on the rising footy stars—the complex is also home to the VFL's Casey Demons. Need a lift? Our neighbourhood is serviced by dedicated bus lines for a local drop-off around Cranbourne and Frankston, or to take you to the nearby train station to head towards the Melbourne CBD.



Eat and shop

Tick off the daily demands with minimal fuss, even when you're short on time. The supermarket at Brompton's future shopping centre will take the pressure off the usual weekly shopping missions, whether it's a full pantry restock or late-night ice cream craving. This convenience extends to transport: buses and highways provide easy access to local shops and schools, Westfield Fountain Gate, through to Dandenong, Berwick and Frankston. The local and surrounding area also offers plenty of brunch spots, for when you're looking to steal a quiet moment, or catch up with family and friends while the kids are at school.







Main park and wetlands





Little Wolf

On-site café

Little Wolf is the perfect spot for a leisurely breakfast or a quick lunch break. With a delicious menu that changes seasonally, why not drop in for a chat with our friendly team, and mingle with your neighbours over a freshly-ground single-origin blend? Located at Encore Boulevard, Brompton.

LittleWolfCafe.com.au



Townhomes

Architecturally designed with leading Melbourne based architects DKO.

Two and four bedroom homes will appeal to the most discerning buyers. Our design team has crafted homes defined by a clever use of space and enhanced by beautiful materials and finishes. The homes are oriented to optimise natural light and views of the surrounding greenery as it changes from season to season.







Artist's impression: Standard 4 bed layout



Designed with flexibility in mind...

Brompton has been designed with flexibility and choice in mind; whether you're a 'down-sizer' looking for a low maintenance lifestyle, a young couple looking for a home to start a family in, or a large family needing the extra room a large double storey home can offer.



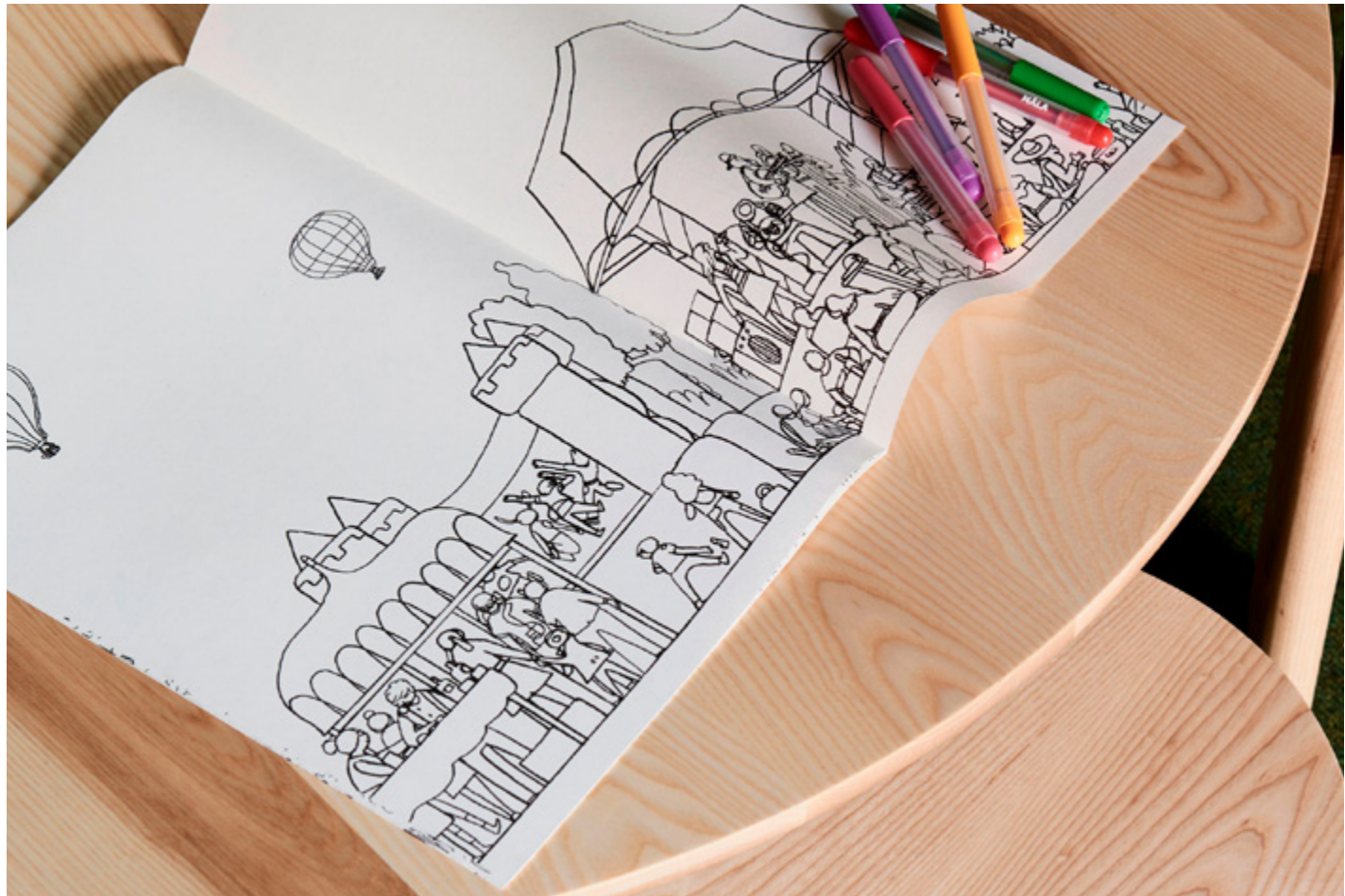
This is us



At Wolfdene, our projects speak for themselves. Because every development is different, we bring each project to life with its own unique personality and style. Brompton is our landmark project and we're driven to deliver this high-quality development on time and meet every target along the way. We see all our projects through from start to finish, managing each development completely in-house.

Building a home is an exciting new beginning for your whole family. We feel the same way, so that's why we create places where you'll lead the kind of lifestyle you've always wanted.

[Wolfdene.com.au](https://www.wolfdene.com.au)



Brompton Sales Suite

Disclaimer: While best endeavours have been used to provide information in this publication that is true and accurate, Wolfdene and related entities accept no responsibility and disclaim all liability in respect to errors or inaccuracies it may contain. Prospective purchasers should make their own inquiries to verify the information contained herein. All copy, illustrations and images are depictions for presentation purposes only.

